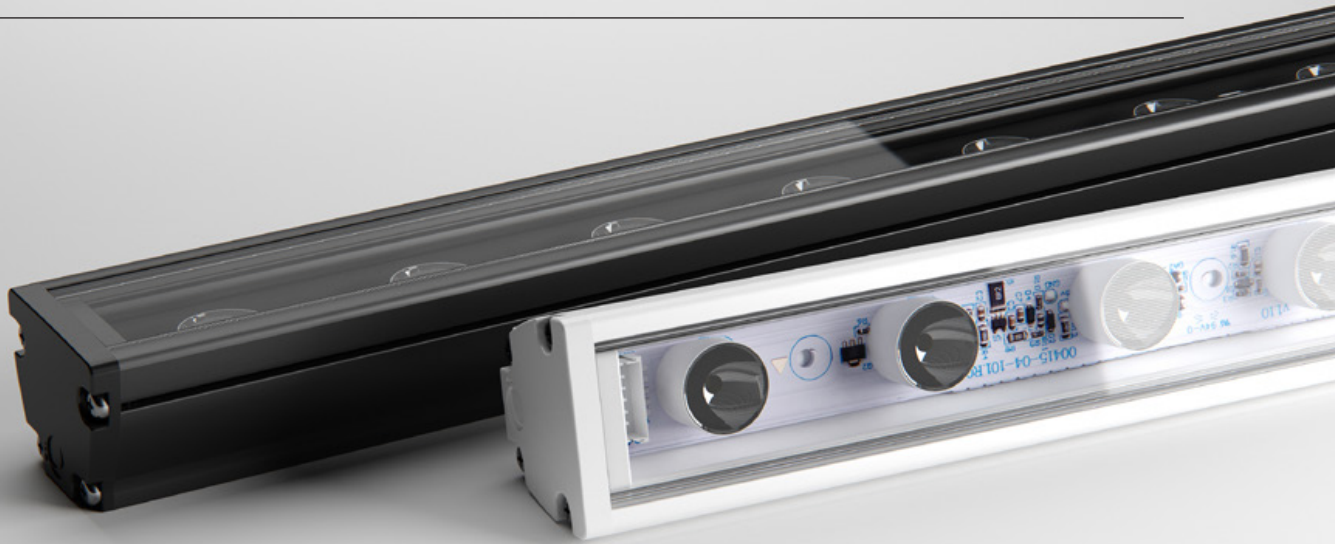




MAX MINI TW IP

LINEAR MEDIUM POWER LNR-MAX MINI TW IP





Max Mini TW IP is a medium-power, outdoor, tunable white (2700K – 6500K) linear luminaire with precision optics.

Unique encapsulation methods and a robust form factor provide IP66/IK08 for unbeatable durability and resistance against exterior conditions.

Optic selection and the assistance of a range of brackets ensure easy installation and accurate aiming, allowing you to execute your design with accurate results.

POWER

30W

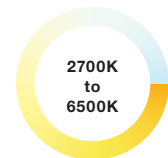
30W / metre

LUMINOUS FLUX



SC · 2,250 – 2,600 lm / metre

TUNABLE WHITE



TUNABLE WHITE

Reproduce and maintain perfect white light ranging from 2700 to 6500k. Colour temperature (CCT) and intensity control made simple.

ELEGANT ENCAPSULATION

Max Mini TW IP utilises Coolon's encapsulation technology and signature build quality to deliver an outdoor luminaire that's uniquely resilient. IP66, IK08, shock and abrasion resistance and thermal protection just add to the appeal of this versatile all-star.



LONG OPERATING LIFE

Coolon products use the world's most reputable LED manufacturers and the latest available standards to adequately report lumen maintenance. We strive to drive LEDs under their nominal current and use state-of-the-art heat dissipation methods, leading to durable electronics.



VARIOUS CCT & COLOUR BINNING CONSISTENCY

All products are offered in various colour temperatures, and manufactured using tighter bins, ensuring excellent consistency and uniformity.



5 YEARS WARRANTY

Coolon luminaires are covered by a solid comprehensive manufacturer's warranty that covers a range of possible defects and performance parameters throughout the duration of the warranty period.



PROUDLY MADE IN AUSTRALIA

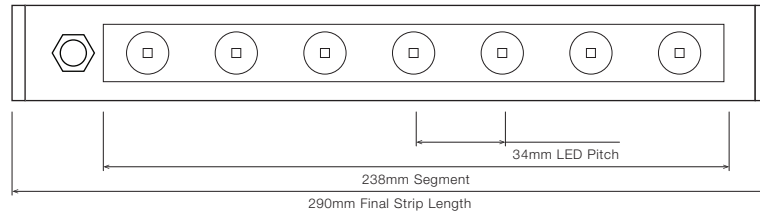
Our products are designed and manufactured in Australia. Engineered to perfection, using only the highest quality components and highly skilled labour, each luminaire is assembled and thoroughly tested to ensure that it exceeds the highest standards.

■ TECHNICAL SPECIFICATIONS

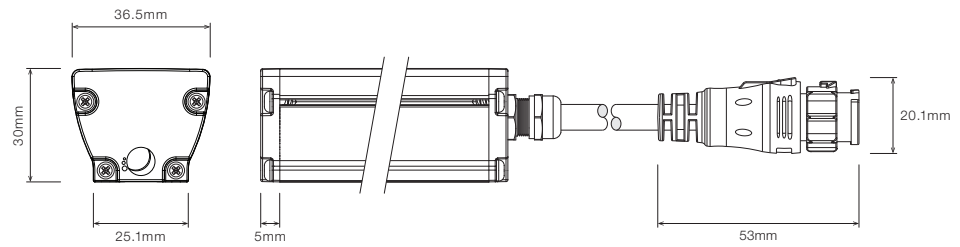
Product Code	LNR-MAX MINI TW IP
Description	Max Mini Tunable White Linear Outdoor Flood Light
Body	Aluminium Alloy Body
Finish	Powder Coated White (Standard), Various Colours Available
Cover	Polycarbonate
End Caps	Polycarbonate
Segment Length (S)	238mm
Segment Width	22mm
LED Pitch	34mm
LEDs Per Segment	7
Operating Voltage	24VDC
Typical Power Consumption	6.89W per 238mm Segment
Typical Power Consumption per metre	28.9W
Typical Current	287mA per 238mm Segment
Colour Temperature Range	2700K – 6500K
Colour Rendering Index (CRI)	80+
Dimmable	Through EldoLed LINEARdrive range (sold separately)
Typical Luminous Flux per Metre (lm/m)	2,250 – 2,600lm / metre
External Heatsink Required	No
Ambient Operating Temp	-10°C to 50°C
Reported Lumen Maintenance TM21-11 (@ Ts = 85°C, If = 500mA)	L70 (10K) > 60,000 hours L90 (10K) > 40,400 hours
	Max Mini TW IP max. operating values (@ Ts = 85°C, If = 283mA)
IP Rating	IP66
IK Rating	IK08
Max Continuous Connection Length	Please refer to installation limits

■ DIMENSIONS

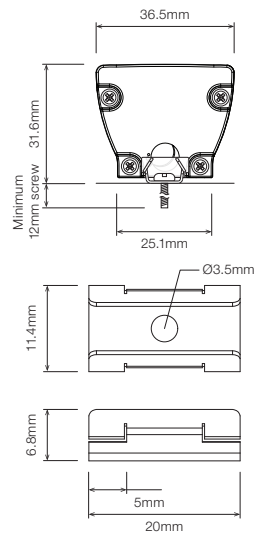
For final strip lengths please refer to the "Product Length" table.



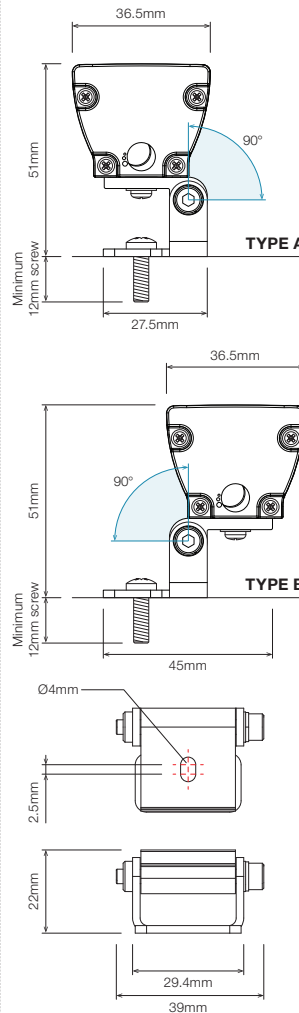
STANDARD PROFILE



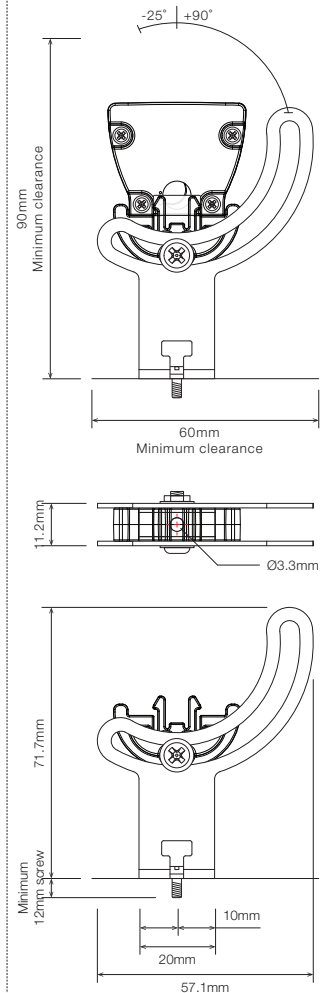
STAINLESS STEEL C-CLIP ¹



ROTATING MOUNTING BRACKET, TYPE A/B ROTATING CLIP ¹



ELEVATED ROTATING MOUNTING BRACKET ^{1 2}

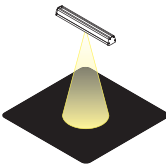
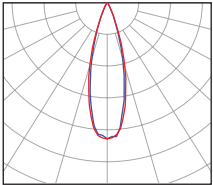
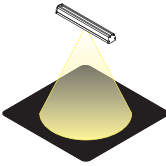
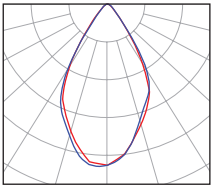
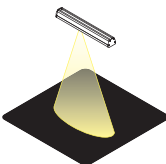
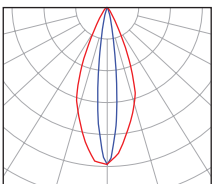
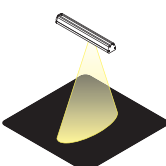
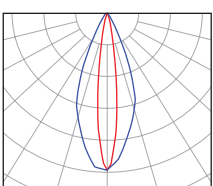


¹ Recommended spacing between Mounting Brackets is maximum 500mm and Mounting Clips is maximum 300mm.
² Elevated rotating bracket is the only suitable option when wire from back is required.

■ PRODUCT LENGTH

FULL SEGMENTS	EXACT STRIP LENGTH	FINAL LENGTH
S1	238mm	290mm
S2	476mm	530mm
S3	714mm	770mm
S4	952mm	1,010mm
S5	1,190mm	1,250mm
S6	1,428mm	1,490mm
S7	1,666mm	1,730mm
S8	1,904mm	1,970mm
S9	2,142mm	2,210mm
S10	2,380mm	2,450mm
S11	2,618mm	2,690mm
S12	2,856mm	2,930mm

■ POLAR DISTRIBUTION

OPTIC		POLAR DISTRIBUTION
30D Medium Beam 30° Beam		
56D Wide Beam 56° Beam		
O4015D Oval Beam Oval 36° x 15° Beam		
R4015D Oval Rotated Beam Oval 15° x 36° Beam		

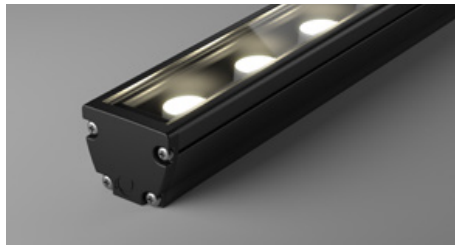
▪ DIFFUSER

PC · Polyurethane Clear

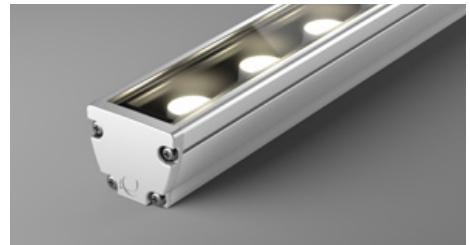


▪ PROFILE COLOUR

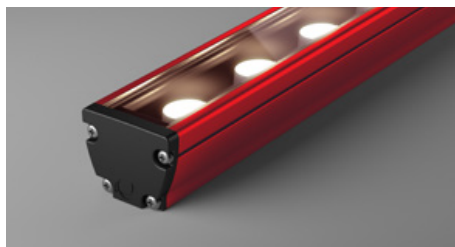
BLK · Black



WHT · White



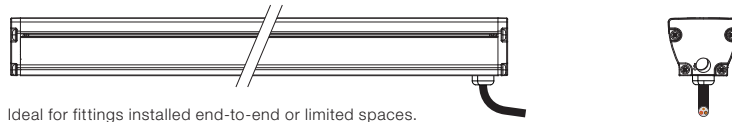
CST · Custom Colour ¹



¹ Custom colours available on request

WIRING POSITION

WB - Wire from back



Ideal for fittings installed end-to-end or in limited spaces.

WS - Wire from Side



Ideal for fittings installed individually or vertically.

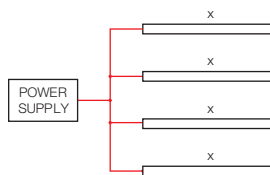
IP RATING

IP66

Fully protected against dust.
Protected against wave-like water jets from all directions.

INSTALLATION LIMITS

SCENARIO 1



MAX. CONTINUOUS CONNECTION LENGTH (X) CONNECTOR TYPE

2,930 mm 1,000mm long cable with 4 Pin Quick Connector (see accessories for mating leader cables)

Please consult Coolon for details on extension cable between LED fittings, drivers and power supplies.

⚠ WARNING

Avoid connecting multiple power supplies into a single circuit, unless they are specifically designed to do so.

✗

✗

ORDERING EXAMPLE

LNR - MAX MINI TW IP - S2 - O4015D - PC - WHT - WB - IP66



PRODUCT LENGTH

S1	290mm
S2	530mm
S3	770mm
S4	1010mm
S5	1,250mm
S6	1,490mm
S7	1,730mm
S8	1,970mm
S9	2,210mm
S10	2,450mm
S11	2,690mm
S12	2,930mm

OPTICS

30D	30° Beam
56D	56° Beam
O4015D	Oval 40° x 15° Beam
R4015D	Oval 15° x 40° Beam

DIFFUSER

PC	Polyurethane Clear
----	--------------------

PROFILE COLOUR

WHT	White (Standard)
BLK	Black
CST	Custom Colour ¹

WIRING POSITION

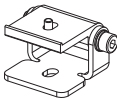



WB	Wire from Back
WS	Wire from Side

IP RATING

IP66	Outdoor Use
------	-------------

¹ Custom colours available on request

■ ACCESSORIES

	PRODUCT CODE	DESCRIPTION
MOUNTING ¹		
	MC-CCLIP	Stainless Steel C-Clip
	MBR-RB-TA-BLK	Rotating Bracket, TYPE A Rotating Clip - Black
	MBR-RB-TB-BLK	Rotating Bracket, TYPE B Rotating Clip - Black
	MBR-PMAX-E-BLK	Elevated Rotating Mounting Bracket for Max Mini - Black
	MBR-PMAX-E-WHT	Elevated Rotating Mounting Bracket for Max Mini - White
¹ Recommended spacing between Mounting Brackets is maximum 500mm and Mounting Clips is maximum 300mm.		
DRIVER		
	DRV-LN200D-D2Z2C	LINEARdrive, 224W, DALI DT8 , 2 Control CH, 2 Outputs
	DRV-LN200D-D2Z2D	LINEARdrive, 224W, DALI DT6 , 2 Control CH, 2 Outputs
POWER SUPPLY FOR OUTDOOR USE		
	PWR-HLG60-24V	Mean Well Power Supply HLG 60W 24V
	PWR-HLG150-24V	Mean Well Power Supply HLG 150W 24V
	PWR-HLG240-24V	Mean Well Power Supply HLG 240W 24V
CABLE EXTENSIONS		
	CBLEXT-LNR-OC4FX-IP65-4M	4m Length, 4 Core Leader Cable with outdoor Female Quick Connector and loose wires