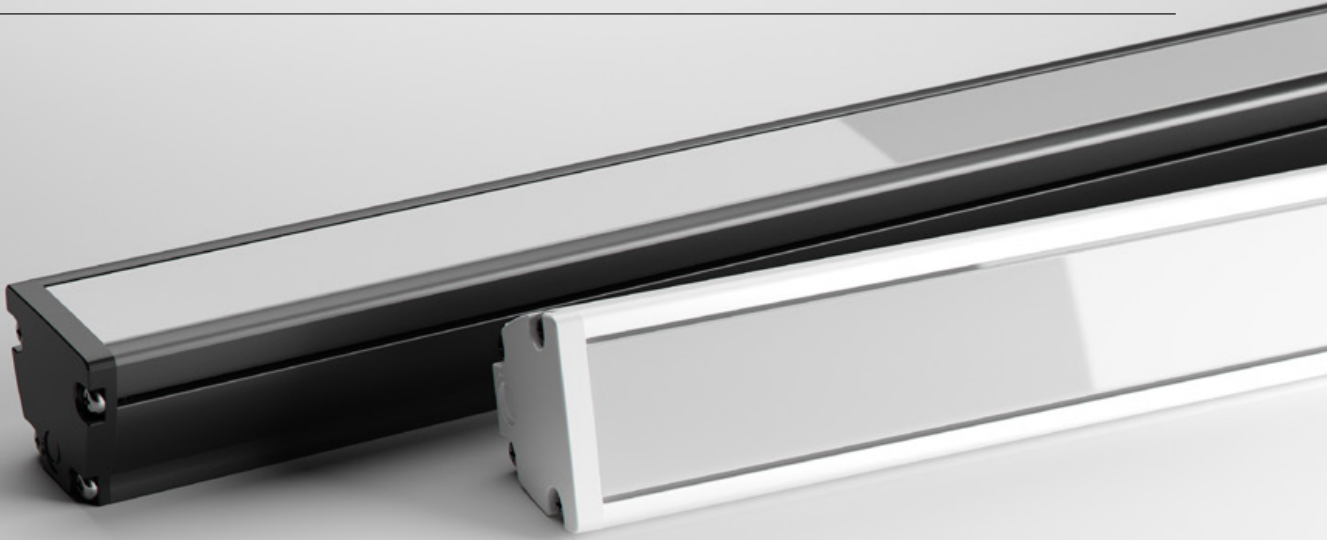




MAX MINI RGBW IP

LINEAR MEDIUM POWER LNR-MAX MINI RGBW IP





Max Mini RGBW IP is a compact and versatile RGBW colour changing luminaire designed for outdoor applications.

The profile is fully encapsulated with polyurethane resin for superior longevity in outdoor environments and appears completely uniform.

POWER**40W**

38.4W / metre

LUMINOUS FLUX**RGBW** · Varies with colour (900 lm / metre max) *

RGBW FULL COLOUR

* Output for full RGBW brightness

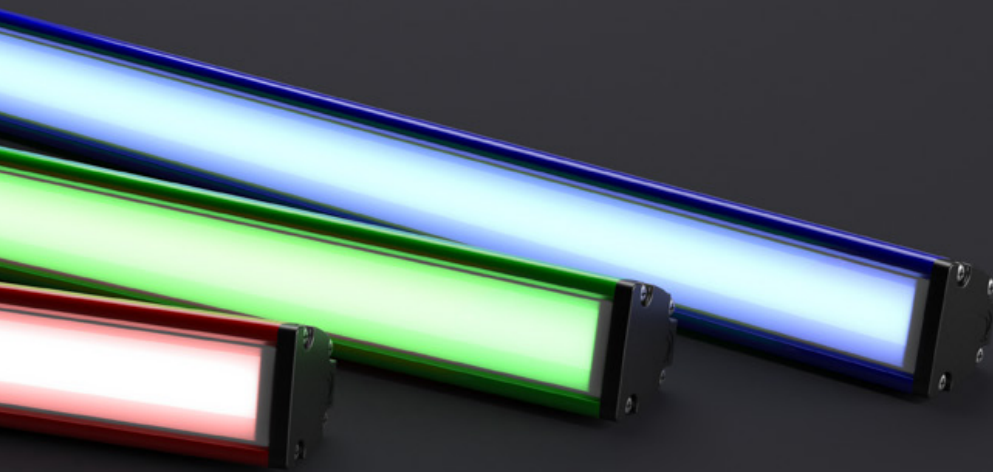
COMPACT SIZE

The reduced profile dimensions allow for ease of installation in confined spaces that could not be achieved with previous halogen counterparts. When installed in visible sight, Max Mini RGBW IP also pays respect to the interior design with minimal disruption to the aesthetics.



ELEGANT ENCAPSULATION

Max Mini RGBW IP utilises Coolon's encapsulation technology and signature build quality to deliver an outdoor luminaire that's uniquely resilient. IP66, IK08, shock and abrasion resistance and thermal protection just add to the appeal of this versatile all-star.



LONG OPERATING LIFE

Coolon products use the world's most reputable LED manufacturers and the latest available standards to adequately report lumen maintenance. We strive to drive LEDs under their nominal current and use state-of-the-art heat dissipation methods, leading to durable electronics.



VARIOUS CCT & COLOUR BINNING CONSISTENCY

All products are offered in various colour temperatures, and manufactured using tighter bins, ensuring excellent consistency and uniformity.



5 YEARS WARRANTY

Coolon luminaires are covered by a solid comprehensive manufacturer's warranty that covers a range of possible defects and performance parameters throughout the duration of the warranty period.



PROUDLY MADE IN AUSTRALIA

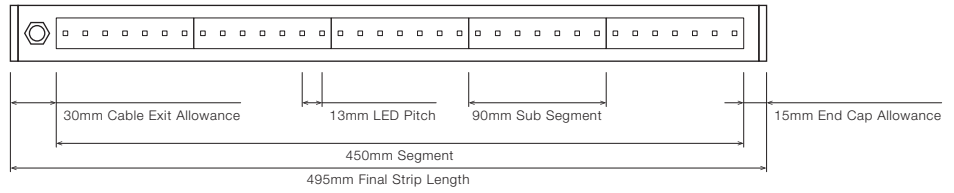
Our products are designed and manufactured in Australia. Engineered to perfection, using only the highest quality components and highly skilled labour, each luminaire is assembled and thoroughly tested to ensure that it exceeds the highest standards.

■ TECHNICAL SPECIFICATIONS

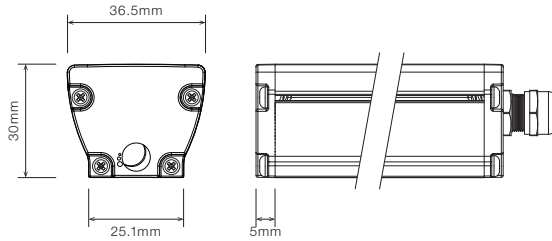
| | |
|-------------------------------------|---|
| Product Code | LNR-MAX MINI RGBW IP |
| Description | Max Mini RGBW IP Linear Medium Power Projector |
| Body | Aluminium Alloy Body |
| Finish | Powder Coated Black (Standard), Various Colours Available |
| Cover | Polyurethane Translucent for Outdoor Applications |
| End Caps | Polycarbonate |
| Segment Length (S) | 450mm |
| Sub-Segment Length (A) | 90mm |
| Number of Sub-Segments | 5 |
| LED Pitch | 13mm |
| LEDs Per Sub Segment | 7 |
| Operating Voltage | 24VDC |
| Typical Power Consumption per Metre | 38.4W per Metre |
| Typical Current | 720mA per 450mm Segment |
| Colour Rendering Index (CRI) | 80+ |
| Dimming / Control | Through DRV-RDM-P4 or RDM-IP-P4 (sold separately) |
| Luminous Flux per Metre (lm/M) | Varies with colour - 900 lm / metre max (output for full RGBW brightness) |
| External Heatsink Required | No |
| Ambient Operating Temp | Ta -10°C to 40°C |
| Thermal Protection | Yes |
| Average Lumen Maintenance @Ta 25°C | 70% @ 50,000 Hours |
| IP Rating | IP66 (Standard) |
| IK Rating | IK08 |
| Max Continuous Connection Length | Please refer to installation limitations |

■ DIMENSIONS

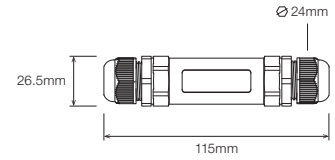
For final strip lengths please refer to the "Product Length" table.



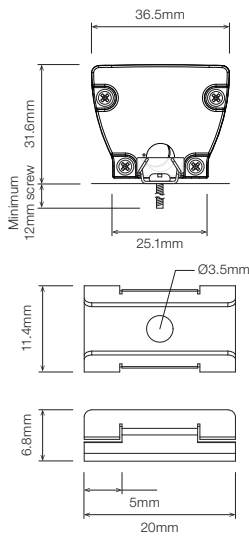
STANDARD PROFILE



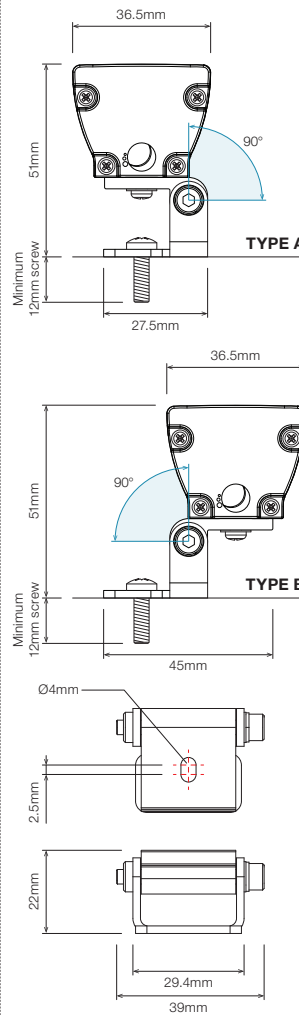
CABLE EXTENSION JOINER



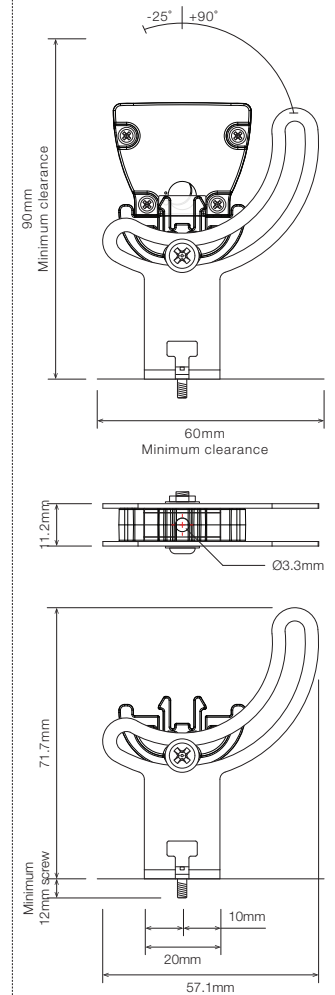
STAINLESS STEEL C-CLIP ¹



ROTATING MOUNTING BRACKET, TYPE A/B ROTATING CLIP ¹



ELEVATED ROTATING MOUNTING BRACKET ^{1 2}



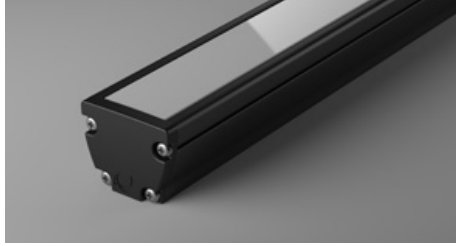
¹ Recommended spacing between Mounting Brackets is maximum 500mm and Mounting Clips is maximum 300mm.
² Elevated rotating bracket is the only suitable option when wire from back is required.

■ PRODUCT LENGTH

| FULL SEGMENTS | SUB SEGMENTS | EXACT STRIP LENGTH | FINAL LENGTH |
|---------------|--------------|--------------------|--------------|
| S0 | A1 | 90mm | 135mm |
| S0 | A2 | 180mm | 225mm |
| S0 | A3 | 270mm | 315mm |
| S0 | A4 | 360mm | 405mm |
| S1 | A0 | 450mm | 495mm |
| S1 | A1 | 540mm | 585mm |
| S1 | A2 | 630mm | 675mm |
| S1 | A3 | 720mm | 765mm |
| S1 | A4 | 810mm | 855mm |
| S2 | A0 | 900mm | 945mm |
| S2 | A1 | 990mm | 1,035mm |
| S2 | A2 | 1,080mm | 1,125mm |
| S2 | A3 | 1,170mm | 1,215mm |
| S2 | A4 | 1,260mm | 1,305mm |
| S3 | A0 | 1,350mm | 1,395mm |
| S3 | A1 | 1,440mm | 1,485mm |
| S3 | A2 | 1,530mm | 1,575mm |
| S3 | A3 | 1,620mm | 1,665mm |
| S3 | A4 | 1,710mm | 1,755mm |
| S4 | A0 | 1,800mm | 1,845mm |
| S4 | A1 | 1,890mm | 1,935mm |
| S4 | A2 | 1,980mm | 2,025mm |
| S4 | A3 | 2,070mm | 2,115mm |
| S4 | A4 | 2,160mm | 2,205mm |
| S5 | A0 | 2,250mm | 2,295mm |
| S5 | A1 | 2,340mm | 2,385mm |
| S5 | A2 | 2,430mm | 2,475mm |
| S5 | A3 | 2,520mm | 2,565mm |
| S5 | A4 | 2,610mm | 2,655mm |
| S6 | A0 | 2,700mm | 2,745mm |
| S6 | A1 | 2,790mm | 2,835mm |
| S6 | A2 | 2,880mm | 2,925mm |

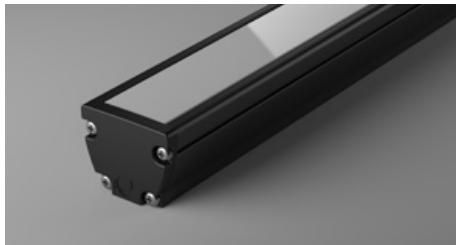
▪ DIFFUSER

PT · Polyurethane Translucent - Uniform Glow

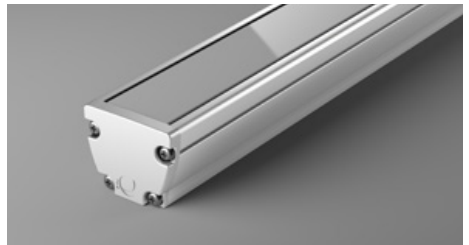


▪ PROFILE COLOUR

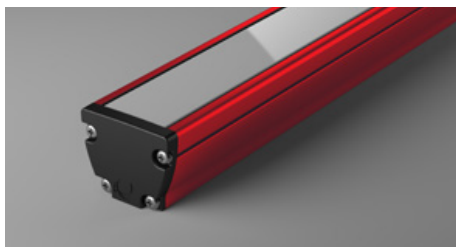
BLK · Black



WHT · White



CST · Custom Colour ¹



¹ Custom colours available on request

WIRING CONFIGURATION

CONNECTOR TYPE

DRAWING

MALE

FEMALE

OC6MO
Outdoor Connector 6 pin Male Only



- Typical wiring length 1,000mm with cable's outer diameter 5.8mm
- Supplied with mating connector and 3,000mm cable
- Please consult Coolon for details on extension cables between LED fittings, drivers and PSUs.

| WIRING COLOUR CODE | |
|--------------------|---------|
| Orange / Yellow | + VDC |
| Red | - RED |
| Green | - GREEN |
| Blue | - BLUE |
| White | - WHITE |

WIRING POSITION

WB - Wire from back



Ideal for fittings installed back-to-back or limited spaces.



WS - Wire from Side



Ideal for fittings installed individually or vertically.



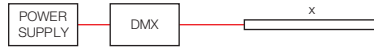
IP RATING

IP66

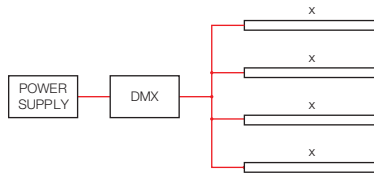
Fully protected against dust.
Protected against wave-like water jets from all directions.

■ INSTALLATION LIMITS

SCENARIO 1



SCENARIO 2



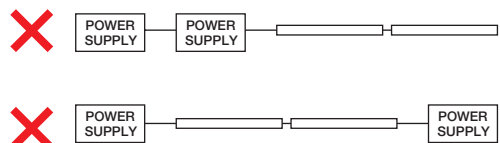
MAX. CONTINUOUS CONNECTION LENGTH (X) CONNECTOR TYPE

3,000 mm With standard outdoor 6 pin connectors (OC6MO)

- Please consult Coolon for details on extension cable between LED fittings, drivers and power supplies.

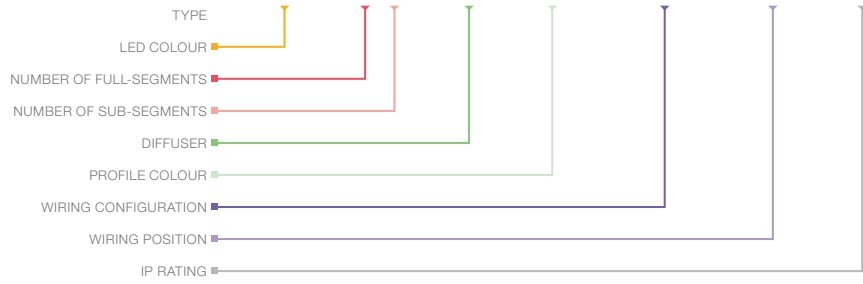
⚠ WARNING

Avoid connecting multiple power supplies into a single circuit, unless they are specifically designed to do so.



ORDERING EXAMPLE

LNR - MAX MINI RGBW IP - WW - S2A0 - PT - BLK - OC6MO - WB - IP66



■ **LED COLOUR**

| | |
|----|------------------|
| WW | RGB + Warm White |
| CW | RGB + Cool White |

■ **PRODUCT LENGTH** PAGE 06

| FULL SEGMENTS | SUB SEGMENTS |
|---------------|--------------|
| S1 | A0 |
| S2 | A1 |
| S3 | A2 |
| S4 | A3 |
| S5 | A4 |
| S6 | |

■ **DIFFUSER** PAGE 07

| | |
|----|---|
| PT | Polyurethane Translucent - Uniform Glow |
|----|---|

■ **PROFILE COLOUR** PAGE 07

| | |
|-----|----------------------------|
| BLK | Black (Standard) |
| WHT | White |
| CST | Custom Colour ¹ |

■ **WIRING CONFIGURATION** PAGE 08

| | |
|-------|-----------------------------------|
| OC6MO | Outdoor Connector 6 pin Male Only |
|-------|-----------------------------------|

■ **WIRING POSITION** PAGE 08

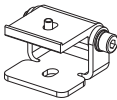


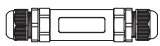
| | |
|----|----------------|
| WB | Wire from Back |
| WS | Wire from Side |

■ **IP RATING** PAGE 08

| | |
|------|-------------|
| IP66 | Outdoor Use |
|------|-------------|

¹ Custom colours available on request

■ ACCESSORIES

| | PRODUCT CODE | DESCRIPTION |
|--|--------------------------|--|
| MOUNTING ¹ | | |
|  | MC-CCLIP | Stainless Steel C-Clip |
| | MBR-RB-TA-MAX-BLK | Rotating Bracket, TYPE A Rotating Clip - Black |
| | MBR-RB-TB-MAX-BLK | Rotating Bracket, TYPE B Rotating Clip - Black |
| | MBR-PMAX-E-BLK | Elevated Rotating Mounting Bracket for Max Mini - Black |
| | MBR-PMAX-E-WHT | Elevated Rotating Mounting Bracket for Max Mini - White |
| ¹ Recommended spacing between Mounting Brackets is maximum 500mm and Mounting Clips is maximum 300mm. | | |
| DRIVER | | |
|  | DRV-RDM-P4 | DMX/RDM 4 Channel LED Driver |
| | DRV-RDM-IP-P4 | Outdoor DMX/RDM 4 Channel LED Driver |
| | DRV-RDM-IPQC-P4 | Outdoor DMX/RDM 4 Channel LED Driver + Quick Connect |
| | DRV-RDM-IPQC05-P4 | Outdoor DMX/RDM 4 Channel LED Driver + Quick Connect |
| POWER SUPPLY | | |
|  | PWR-HLG-60H-24AU | Mean Well Power Supply HLG 60W 24V IP67 |
| | PWR-HLG-150H-24AU | Mean Well Power Supply HLG 150W 24V IP67 |
| | PWR-HLG-240H-24AU | Mean Well Power Supply HLG 240W 24V IP67 |
| CABLE EXTENSIONS | | |
|  | CBLEXT-LNR-OC6F-IP65-1M | 1m Length, 6 Core Leader Cable with outdoor female connector and loose wires |
| | CBLEXT-LNR-OC6F-IP65-3M | 3m Length, 6 Core Leader Cable with outdoor female connector and loose wires |
| | CBLEXT-LNR-OC6F-IP65-5M | 5m Length, 6 Core Leader Cable with outdoor connector and loose wires |
| | CBLEXT-LNR-OC6F-IP65-10M | 10m Length, 6 Core Leader Cable with outdoor connector and loose wires |